



THE BETHLEHEM STAR

T O K N O W C H R I S T . . . T O M A K E C H R I S T K N O W N



PASTOR'S MESSAGE

MEGAN FRYLING

Senior Pastor

pastor@bethlehemlutheran.net

People of Bethlehem,
This time of year is always busy with parties and events. Those things are great (especially the Bethlehem parties!), but it's also essential to reflect

on the fact that Jesus' birth is the center of this season- that's what we're celebrating, that's what brings us our true joy in this season and through the year. Jesus is where we find our hope and our inspiration today and once all of the festivities have passed. Jesus' love is not just for a season- it's forever.

In the church calendar, Advent is usually a season where we talk about waiting, but this year we'll be taking a slightly different spin on the season that will look into where God is calling us to act in the world right now. For this season we will be looking at the traditional Advent themes of Hope, Peace, Joy, and Love from the lens of considering what can't wait.

We have a daily devotional booklet available to pick up at church that has a simple devotion for each day of Advent. It's a way for you to take a brief moment each day to reflect and ponder the texts and what God is calling you to in this season and in your life.

Sermons will be based on this theme and we'll have Sunday Forums at 12:15 for 3 of the weeks of Advent. The Sunday Forums are put together by members of the Education Committee and both of the pastors. I highly encourage you to attend those forums.

Advent Blessings,

Pastor Megan



SUNDAY WORSHIP:

9:00 AM – CONTEMPORARY STYLE
10:10 AM – SUNDAY SCHOOL
(SEPT-MAY)
11:00 AM – TRADITIONAL STYLE

STAFF:

SENIOR PASTOR:

REV. MEGAN HUNT FRYLING
pastor@bethlehemlutheran.net

ASSOCIATE PASTOR:

REV. IOAN ITTU
pastorioan@bethlehemlutheran.net

DIRECTORS OF MUSIC MINISTRY:

VICENTE DITTO
MARISA RAWLINS-BRADFIELD
MATTHEW A. KESSELL
vicenteditto@bethlehemlutheran.net
marisabradfield@bethlehemlutheran.net
matthewkessell@bethlehemlutheran.net

YOUTH DIRECTOR:

JENNIFER ADKISON
youthdirector@bethlehemlutheran.net

BOOKKEEPER:

KAREN MEIER
finance@bethlehemlutheran.net

BUSINESS ADMINISTRATOR:

WANDA MORENO
admin@bethlehemlutheran.net

FRONT OFFICE ASSISTANT:

EVELYN CULAJAY
office@bethlehemlutheran.net

PRESCHOOL DIRECTOR:

MARY ASHDJIAN-KANDILIAN
director@bethlehemlutheran.net

CONTACT BY PHONE:

CHURCH: 818-360-4777
PRESCHOOL: 818-368-6947
FAX: 818-360-5559

SUMMARY OF BETHLEHEM COUNCIL MINUTES – NOVEMBER 20, 2019

Summary of Minutes is forthcoming.

TWIN VALLEYS LUTHERAN PARISH

Another church in the San Fernando Valley joining our Twin Valleys Conference?

Not exactly, but a concept being developed by some of our Lutheran churches in the Conference. It is not a physical church located anywhere, but a coalition of churches attempting to form a covenant with clergy and laity to strengthen collaboration in witness to the love, mercy and justice of our Triune God, and cast a vision to inform future investment of time, treasure and talents in our regional ministry. What – exactly – does this mean?

There are 16 congregations in our Twin Valleys Conference. Many of these churches are very small, many with a part time pastor, and many with very few volunteers to do outreach in our varied communities.

The Twin Valleys Lutheran Parish (TVLP) has obtained a grant to begin discussions between the churches at this time because many of the smaller congregations are in some stage or another of significant transition. Working groups are being formed to address different areas of ministries (youth/young adult, homeless issues, etc.) and an Interim Executive Director has been hired with the grant funds to help organize this Parish. An Interim Board has been established with clergy and members of some congregations and have begun meeting on a monthly basis. A Memo of Understanding (Covenant) and Policies and Procedures are being worked on, and collaborations between the churches have begun.

There are lots of moving parts at this time, and nothing has been finalized. Each congregation will have the opportunity to vote to join this Parish after considerable prayer, discussion and lots more work.

More to follow in the weeks and months to come.

Jan Maseda

CHRISTMAS POINSETTIAS

Place your order for Christmas poinsettias. There's a sign-up sheet in the back of the church. The price is \$12 per plant and they come in 6 inch pots with a festive pot cover. They are yours to take home after the Christmas Eve worship services. The last day to order will be Sunday, December 15.

Leave a check marked "poinsettias" in the offering plate or in the black mailbox on the wall by the church office. Thank you for helping make our sanctuary look beautiful for our Christmas services!



HOLIDAY EVENTS

Advent Family Night

Friday, December 6 from 6 p.m.-8 p.m.

Christmas Concert

Saturday, December 7 • 3 p.m.

Congregational Christmas Party

Sunday, December 8 • 6p.m.

Women's Christmas Party

Saturday, December 14 • 6p.m.

Caroling

Sunday, December 15 • 12 p.m.

Christmas Program

Thursday, December 19 • 4 p.m.

Christmas Eve services

December 24 • 5 p.m. & 11 p.m.



PRESIDENT'S MESSAGE

SARAH KARZEL

president@bethlehemlutheran.net

Dear Fellow Members of Bethlehem,

As I look back on our first year of combined ministry, I feel very grateful! Grateful for the new members with their new perspectives and new energy. Grateful for the legacy members of Bethlehem who welcomed the new members with love and generosity. Grateful for the joyful noise I hear every Sunday as members mingle, chat, laugh and raise their voices in prayer and song.

In the first week of January, we will be starting on the remodeling of the back hallway. We will be adding a rest room (imagine having a rest room that you don't need to go outside to access). We will also be improving the space so that it can be used as a meeting room, a youth space and as a much improved teacher lounge. The contractor predicts it will take about 10 weeks. He has committed to doing much of the work overnight to minimize disruption to both school families and church members. Nevertheless, I'm pretty sure it will be disruptive to everyone involved, so I hope everyone can try to patient.

In preparation for the construction, we had to clear out the storage contained there, move lots of it into new locations and dispose of some of it. We had a small army of members representing Fellowship, Altar Guild, Youth, etc. come a couple of Saturdays ago and get that job done. I am really grateful for all the help!

There is also the larger building project to add office, storage and meeting space. We need to put together a building committee to gather input, make up a building plan and work with architects and builders. I hope to get that committee started right after the first as well.

The new sound system is being finalized with strong efforts from our music team and worship team. With luck it will be installed and functioning well in December. As you know, part of the plan is to install screens as well. We are planning meetings in January to discuss how those will be used.

Finally, 2019 was a good year in the stock market, and so our endowment fund returned 8.5% and has grown by about \$300,000.

I hope you all have a wonderful, peaceful and joyful Christmas season! As always, please reach out if you have any questions or concerns.

Respectfully submitted, *Sarah Karzel*

ANGEL TREE

Angel Tree is a program for children who have a parent who is incarcerated in prison. The gift is from that parent. We are God's Angels bringing a gift of Love for one of God's children.

- November 17th and 24th an angel was picked up
- Dec. 1st and 8th bring gifts back to church, wrapped with the Angel Sticker attached.
- Dec. 15th the gifts will be picked up by the children's guardians.

If you would like to help or have any questions, please contact Judy Cave at 818-894-7773.



MUSIC NOTES

VICENTE DITTO

Senior Music Minister

vicenteditto@bethlehemplutheran.net

I would like to thank everyone who participated in our Thanksgiving service. In the spirit of giving thanks with neighbors, not only did we share worship with our Methodist neighbors, but we also combined choirs to sing the evening's anthem. I hope that this will be a new tradition that will continue as both groups sounded wonderful together.

Our Christmas concert will be equally as lovely and will showcase all of our ensembles at Bethlehem. Please join us for an afternoon of varied music on Saturday, December 7th at 3 p.m. featuring such fun things as "Little Drummer Boy" as performed by David Bowie and Bing Crosby, a gospel piece, Sacred Stars, and, of course, bells. A free will offering will be collected for the benefit of the music department. See you there!

CHRISTMAS CONCERT

Saturday, December 7 at 3 p.m. at Bethlehem. Our Annual Christmas Concert is filled with joyful music of the season! A reception will follow. Please invite your family & friends!



COOKIES NEEDED FOR CHRISTMAS EVE

Please bring cookies to share at the 5 p.m. Family Service. We will be having cookies & milk following the service. Thank you.

CHRISTMAS EVE SERVICES

Tuesday, December 24

Celebrate Jesus' birth with us!

5 p.m.-Family Service

11 p.m.-Candlelight Service

We offer two services on Christmas Eve. Our Family Service is at 5 p.m.. We will have a drama and enjoy cookies & milk after the service.

At 11 p.m. we will have our traditional Candlelight Worship Service. Hope you will join us!



Date	12/24/2019 5PM	12/24/2019 11PM
Assisting Minister		Nancy Hall
Reader	Ken Cave	Marilyn Fursman
Ushers	Kevin Rubinstein	
Greeter	X	
Altar Guild	All	All
Acolyte	Paige Gleason	
Communion Asst.		
	X	
Candle Assistants	Alison Rubinstein	

SCHOOL NEWS

MARY KANDILIAN

Preschool Director

Director@bethlehemlutheran.net



We hope you all had a wonderful Thanksgiving weekend! Happy December to you all!

We're excited to let you know of 2 upcoming events in December.

- Advent Night is scheduled for **THIS FRIDAY**, December 6th, from 6-8pm - This very special event organized by the church and school, allows us to come together as a community with our little ones to usher in the season of Advent in a festive and meaningful way. We will share a potluck dinner, make holiday crafts, decorate cookies, light our school Christmas tree, and sing carols. The event is free to attend and promises lots of holiday fun for everyone--we hope to see you there! Please encourage your family and friends to join us as well. We also are in need of signups for potluck dishes and supplies, cookie decorating supplies, and volunteer needs (both ahead of the event, and at the event itself).

- Christmas Program December 19 at 4 p.m. We will have an age group staggered performance in the sanctuary followed by an awesome Christmas program in the courtyard with SNOW, a hot cocoa bar, snacks, games, crafts and a special guest appearance by the big man himself, Santa! We'll also have a Santa station where you can take family photos as well! Kids get in for free and **ONLY \$5** for adults! So much fun for the whole family! Bring everyone!

And finally on behalf of all our Bethlehem students, staff, and administration we'd like to wish all our church family members a very Merry Christmas and Happy New Year!

SOCIAL MINISTRY

The Social Ministry team asks for your help with the LSS Christmas toy drive. There's a donation box in Chandler Hall. TOYS for all ages are needed for the many families that will be served by LSS this Christmas. The Toy Give-a-Way will be Saturday, December 14th. We will need all toys by Sunday, December 8th.

In addition, we are also collecting HATS and SOCKS for the mothers and children of Hope. Please help decorate the tree in Chandler Hall with fun, warm hats and socks! Thank you!

JILL'S HANDCRAFTED CHRISTMAS SALE

Sundays, December 1-December 22 between services and following the second service at Bethlehem. Contact Jill Goddard at 661-495-6503 or jigoddard@earthlink.net if you have any questions or special requests. Jill crochets and knits beautiful scarves, hats, afghans, throws, purses, ponchos, wraps, and other wearables.

100% of sales go to World Vision. Jill has had friends who have seen the wonderful work that World Vision has done and she is very impressed and excited to see what we can do to support them. Opportunities include farming, schooling, clean water, medical care, and sharing God's light through Bibles and Sunday School.

To read more about World Vision, check out the website: worldvisiongifts.org

ADVENT FAMILY NIGHT

Friday, December 6 from 6 p.m.-8 p.m.

Join us for a family event as we begin the season of Advent together. We will learn about Advent, have dinner, make ornaments, frost cookies, sing carols together, and finish with the traditional tree lighting.



MEET OUR NEW YOUTH DIRECTOR

JENNIFER ADKISON

Director of Youth Ministry

youthdirector@bethlehelutheran.net



Jennifer Adkison is from the Pacific Northwest part of Washington state where she grew up in the Lutheran church. From 2000-2002 Jennifer attended Trinity Lutheran College, where she studied Youth and Family Ministry. In 2003 she was a missionary with the ELCA in England. In 2004 she married her husband, John. They have two sons, Jaxon and Brycen.

As a parent of teenagers, Jennifer is looking forward to spending time with Bethlehem's youth. Many Bible studies, service projects, and fun activities are being planned.

Jennifer is a Jesus follower, human rights activist, and lover of hiking in the mountains. She enjoys spending time with her family - which includes their Saint Bernard - and cooking and baking allergen-free meals and desserts.

Youth Events:

December 14th: Down Syndrome Dance at Bethlehem. Need youth volunteers to help set up (1 p.m.) and tear down (6 p.m.). Youth are invited to stay for the dance.

December 20th: Youth Christmas party at Bethlehem. 5 p.m.-8 p.m.

Please let me know if you have any questions (425-281-1413).

CONFIRMATION CLASS

Sunday, December 1

Home group @ BLC

10:15 a.m.-10:45a.m.

Whole Group @ Shepherd of the Valley in West Hills. 23838 Kittridge Street West Hills, CA 91307

2:00 p.m.- 4:15 p.m.

WOMEN OF THE ELCA BIBLE STUDY

Bethlehem Women of the ELCA's December Bible Study will be a joint meeting with both groups having a Potluck Salad Luncheon with Cookies on Tuesday, December 17th at Dianne Tillman's home. Pastor Megan will be doing the Gather Bible Study. All are welcome! Come join this festive occasion. Time TBD.

CONGREGATIONAL CHRISTMAS PARTY

Share the Christmas spirit by signing up to attend the congregational Christmas party at Gerry & Janet's home on Sunday, December 8th at 6:00 p.m. This is a catered dinner. Details about cost will come later. A sign-up sheet for guests to bring either an appetizer or dessert will appear soon. Contact the church office for more information.

BETHLEHEM WOMEN'S CHRISTMAS PARTY

All ladies are invited to share Christmas joy by joining Linda Boyd at her home (12555 Middle Coff Place Granada Hills, CA 91344) for a wonderful evening on Saturday, December 14th at 6:00 p.m. See the sign-up sheet. Last names beginning A-L, please bring a hearty appetizer. Last names starting with M-Z, please bring a dessert. Please bring a pirate exchange gift for about \$20.00. Join us for a great evening of fun and fellowship.



WANT TO GET IN ON SOME MEANINGFUL CONVERSATIONS?

Check Out Sunday Forums and January's Special Opportunity!

By Marilyn Fursman for Adult Education

Are you missing out on opportunities for spiritual enrichment? Take a look at the upcoming topics being explored during Advent in the Sunday Forum and come join in the conversation. It's a great way to get to know other members on a deeper level as well. The group meets currently in the school classroom closest to the Preschool entrance, Sundays at about 12:30 p.m.

Sunday Forum Topics

In December, the Sunday Forum will offer discussions on the Advent devotional, *What Can't Wait?* Three subjects will be explored in poetry, in meditation, in art, and in action. There's no class on Dec. 15 (remember to go caroling!) or on Dec. 29.

Dec. 1: Pr. Ioan Ittu will lead the discussion on "Hope."

Dec. 8: Nancy Hall will lead the discussion on "Joy."

Dec. 22: Pr. Megan Fryling will lead the discussion on "Love."

Remembering Your Story

I can't tell you how excited I am to be offering a 10-week life review class, beginning Sun., Jan. 12 after the 11 a.m. service. We'll meet for lunch (provided) and deeply meaningful, guided discussions on the stories of our lives, focusing on those instances where we realize God was active in our lives! I have noticed that many of you have wonderful stories to share! THIS IS FOR YOU! Sharing your spiritual journey is a wonderful legacy to provide for future generations. Let them know your faith mattered! LET'S DO THIS!!!

Please contact Marilyn Fursman a.s.a.p. (mcfursman@icloud.com or 818-360-2658) about registering, as workbooks need to be ordered for "Remembering Your Story—Creating Your Own Spiritual Autobiography."

Interested in a midweek morning Bible Study? Join up to a dozen folks meeting Wednesdays at 10:15 a.m. in Chandler Hall to dig deeper into scripture with Pr. Megan Fryling. Currently the focus is on the Book of Acts.

FOCUS ON ADVENT IN SUNDAY FORUM

By Marilyn Fursman

This year, why not resolve to let Sundays in December be your oasis of calm and refreshment in the busyness of the Christmas season?

Spend a few moments in the Sunday Forum after the second service to contemplate what we wait for, what we hope for, what can't wait during the season of anticipation. And while we're at it, we will explore the ways God can't wait to create hope, peace, joy, and love.



ADULT EDUCATION TEAM MEETING

December 17 at 1:00 p.m. at Bethlehem.

The Adult Education Committee meet the third Tuesday of every month.

CHRISTMAS CAROLING

Sunday, December 15, after the 11 a.m. service

Join us for an afternoon of musical visitation to our congregants and friends in the community. All are welcome to participate.



MEET THE MEMBERS: MISS KIERA NUSBAUM

By Marilyn Fursman

"I have a lot to say!" proclaimed 13-year-old Kiera Nusbaum, recently explaining her love for writing plays about issues important to young people her age—issues such as school shootings and climate change. Indeed, she has deep feelings about dark subjects; but she's not only serious. One could describe her also as an extrovert, a fashion conscious girly girl who likes sparkly things, singing, acting and social media.

Typical of Generation Z, she spends more time on social media than on TV. Twitter, Instagram, Pinterest and Tik Tok—a popular music video app—take up most of her limited networking time.

Pew Research recently identified Gen Z (or Centennials), those born between 1997 and 2010, as people who will change the world. Generation Z is the youngest, most ethnically-diverse and largest generation in American history, comprising 27% of the US population. Gen Z grew up with technology, the internet, and social media, which sometimes causes them to be stereotyped as tech-addicted, anti-social, or "social justice warriors." As most blanket statements, this isn't totally true of Kiera.

"I'm pretty open. I have a lot going on and there are a lot of subjects I can relate to," says the accomplished conversationalist.

In her last year at Frost Middle School, she belongs to the Frost Singers and plays guitar and sings with the talented 30-member Mariachi Los Lobos group. Besides singing and writing, her hobbies include acting, which she became hooked on a couple of years ago at a summer acting camp.

Bethlehem members may have seen her earlier this year in a Lenten drama called "The Trial of Jess Goodnuff." She gave a powerful performance in the role of the defense attorney (the Savior figure) and her sweetly innocent countenance brought home the point that Jesus shows up in unexpected, even unrecognizable, ways.

Born in Northridge and baptized in a Lutheran church in Frazier Park, Calif., Kiera attended Bethlehem Preschool and has enjoyed being in the Girl Scouts here since the end of first grade.

She was confirmed at Bethlehem Lutheran Church and liked learning about what Lutherans have in common with other religions and the funny videos that explained things. She says this is where she learned to care about social issues. Most memorable about her confirmation training was the Bible project she did on the story of Joseph in Genesis and her social justice project. This is where she became aware of the challenges presented by climate change, and she is proud that she accomplished the project without using any paper!

Kiera believes people might like to come to Bethlehem because "it is like a family. It is my home. I take part in the youth activities, Vacation Bible School, youth choir and I serve as a communion assistant."

Currently she is undecided about where she will go to high school next year, but her dream is to be able to attend the Juilliard School in New York, a world leader in the arts. "Educating the Next Generation of Artists, Leaders & Global Citizens," says their web site.

Turning serious, this Gen Z girl shared some thoughts about the future: "It's really scary. I hope I can have a future and make a change." What gives her hope is her belief that technology can improve the future.

"You have to keep going," she says, "and God gives us the hope and strength to continue on. God also watches over us, even when things are scary or hard. Even if you're unsure about something or aren't confident yet, you just fake it 'til you make it!"

NEWS FROM OUR SPONSORED MISSIONARIES

We're back!

After many weeks in the US, **we're back** at Tumaini University Makumira, and grateful to be here! We've spent a couple weeks greeting friends, setting up life, and preparing to teach. And as always, we're working to let go one rhythm, one set of rules, one way of doing things in order to pick up another.

We're back, where if one wants hot water, one turns the hot water heater on.

We're back, where we filter our water before drinking.

We're back, where a mosquito net drapes our bed each night.

AND **back**, where our students are so very grateful for the opportunity to study theology. **Back**, where colleagues are grateful for our presence, and where we are grateful for their support. **Back**, to be reminded that in this part of the church, every pastor sees him or herself as called to evangelism, in a highly religiously-pluralistic context where less than half the population is Christian.

We're back, where we are not in charge. Where the class schedules and course load agreed upon before we left the country have changed in many ways, for reasons beyond anyone's control. Where students we thought would be here are not and some we didn't expect are here—also for reasons beyond anyone's control, including the students' themselves.

*To read more please visit <https://mcintz.wordpress.com/>
Blessings to you all, Cynthia and Mark*



NEWS FROM LUTHERAN SOCIAL SERVICES

Christmas Toy Give-a-Way

We will be collecting new toys for our low income families again this year – ages infant to 12 years of age, boys and girls. The Toy Give-a-Way will be Saturday, December 14th. We will need all toys by Sunday, December 8th.

If you or any member of your family would like to help at either of these events, please contact Jan Maseda at (818)288-7054.

Thank you so very much for all of your continued donations of clothes, shoes, food, housewares, used toys and other items. They are greatly appreciated.

*Jan Maseda, Director, LSS/San Fernando Valley
(818)288-7054; janicemaseda@gmail.com*

MEN'S MONTHLY BREAKFAST

We invite men of all ages to join us for fellowship the first Wednesday of every month at 7:30 a.m. at Coco's Restaurant in Mission Hills. See you December 4!

PASTORAL CARE

If you would like a pastoral care visit from one of our pastors, please contact the church office and let us know. (818) 360-4777.

SUBSCRIBE OUR PODCAST!

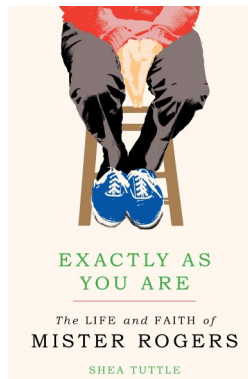
Get each week's sermon and a musical selection delivered to your phone. You can find our podcast on any smartphone or computer through either the Spotify app or Spotify.com by searching for "Bethlehem Granada Hills". You'll know it's our podcast when you see our logo with a set of headphones on it. To have the podcast automatically sent to you when a new one comes out, just click "subscribe" on iTunes.



BOOK CLUB

Book club is taking a break until January 8th. We will start back up with Exactly As You Are: The Life and Faith of Mister Rogers by Shea Tuttle.

For more information please contact Pastor Megan (pastor@bethlehemlutheran.net).



DECEMBER BIRTHDAYS

- 4 John DeCoursey-Thomas
- 4 Ryan Nakata
- 5 Leslie Petit
- 7 Alison Rubinstein
- 13 Jonelle Miller
- 15 Sue Akin
- 16 Shirley Cooper
- 28 Dave Compton

HAPPY BIRTHDAY



DECEMBER ANNIVERSARIES

- 14 John & Jennifer Adkison

NOVEMBER STATISTICS

October offering: \$18,554; Budget: \$22,545
 November offering: \$23,335; Budget: \$22,545
 Actual YTD: \$64,057; Budget YTD: \$67,635

Attendance:

November average at 9 a.m.: 44
 November average at 11 a.m.: 67

October average at 9 a.m.: 50
 October average at 11 a.m.: 51
 October 27 -one service 10 a.m.: 109




WORSHIP LEADER SCHEDULE

If you see an empty spot on the worship leader schedule and you're able to fill in, please call the church office. You can serve one time or be put on a monthly rotation. Thank you.

LIKE US ON FACEBOOK!

If you would like to stay in touch and get updates of events happening at Bethlehem, please visit www.facebook.com/BethlehemGranadaHills and like us!

Also, check out our preschool Facebook page at www.facebook.com/bethlehemlutheranschool

Sunday	Monday	Tuesday	Wednesday	Thursday	Friday	Saturday
1 <u>9 & 11AM</u> Worship 10:10AM Sunday School 10:15AM Home Group 12:15PM Sunday Forum 2PM Whole Group @Shepherd	2 <u>5PM</u> Bell Choir	3	4 <u>7:30AM</u> Men's Breakfast @ Coco's 10:15AM Adult Study 4:30PM Fellowship Team Mtg	5 <u>5:45PM</u> Children's Choir 6:15PM Ensemble 7PM Faith Choir	6 <u>6PM</u> Advent Family Night	7 <u>3PM</u> Christmas Concert
8 <u>9 & 11AM</u> Worship 10:10AM Sunday School 12:15PM Sunday Forum 6PM Congregational Christmas Party	9 <u>5PM</u> Bell Choir	10	11 <u>10:15AM</u> Adult Study 7PM Council Meeting	12 <u>5:45PM</u> Children's Choir 6:15PM Ensemble 7PM Faith Choir	13	14 <u>2PM</u> Down Syndrome Dance 6PM Ladies' Christmas Party
15 <u>9:00AM</u> Worship 10:10AM Sunday School 11:00AM Worship 12:15PM Sunday Forum 12:30PM Caroling	16 <u>5PM</u> Bell Choir	17 <u>1PM</u> Adult Ed Team Mtg	18 <u>10:15AM</u> Adult Study	19 <u>4PM</u> School Christmas Program 5:45PM Children's Choir 6:15PM Ensemble 7PM Faith Choir	20 <u>5-8PM</u> Youth Christmas Party	21
22 <u>9:00AM</u> Worship 10:10AM Sunday School 11:00AM Worship 12:15PM Sunday Forum	23 <u>5PM</u> Bell Choir	24 <u>5PM</u> Family Service <u>11PM</u> Candlelight Service 	25  Office & School Closed	26	27	28
29 <u>9:00AM</u> Worship 10:10AM Sunday School 11:00AM Worship 12:15PM Sunday Forum	30 <u>5PM</u> Bell Choir Church Office closed	31 Church Office closed	Jan. 1  Office & School Closed	2	3	4

DECEMBER WORSHIP LEADER SCHEDULE

WORSHIP LEADERS - 9:00 SERVICE

Date	12-1-19	12-8-19	12-15-19	12-22-19	12-29-19	1-5-20
Assisting Minister	Scott Fisher	Lisa Chow	Laureen Gleason	Mary Fisher	Max Stark	Nicole Hernandez-Liva
Reader	Kathy Fisher	Laureen Gleason	Marisa Bradfield	Emily Carlson	Scott Fisher	Pam Shea
Acolyte	Alison Rubinstein	Katie Nakata	Natalie Nakata	Hannah Carlson	Alison Rubinstein	Richard Liva
Ushers	Natalie Nakata	Brooke Coffin	Alison Rubinstein	Scott Fisher	Katie Nakata	Brian Grefsrud
	Shea Clancy	Mary Fisher	Lisa Chow	Nicole Hernandez-Liva	Pat St. Michel	Carla Cross
Refresh + Juice	Youth Committee	Connie Troe		Lisa & Caden Chow		
Altar Guild	Janet Puchlik	Susan Van Deest	Pat St. Michel	Janet Puchlik		Cookie Cline

WORSHIP LEADERS - 11:00 SERVICE

Assisting Minister	Sandy Lazaros	John Cooper	Ron Kraus	Nancy Hall	Jan Maseda	Jill Goddard
Reader	Marilyn Fursman	Sarah Karzel	Dylan Yribe	Marilyn Galins	Ken Cave	Kevin Rubinstein
Communion Asst.	Dylan Yribe	Kevin Rubinstein		Kiera Nusbaum	Sarah Karzel	
Ushers	Ryan Yribe	Ron Kraus	Ryan Yribe	Kevin Rubinstein	Janet Puchlik	Judy Cave
	Kevin Rubinstein	Jan Maseda	Kelli Yribe	Fred Ophus	Kevin Rubinstein	Ken Cave
Greeter	Janet Puchlik	Susan Van Deest	Jan Maseda	Greg Imlay	Marilyn Fursman	Nancy Hall
Refreshments	Youth Committee	Betty Pust	Greg Imlay			
	X	Judy Cave				
Offering Counters	Fred Ophus	Dwayne Schmidt	Pat St. Michel	Brian Grefsrud	Mary Fisher	Brian Grefsrud
	Pat St. Michel	Carla Cross	Susan Van Deest	Ken Cave	Dwayne Schmidt	Carla Cross

PIERCE COLLEGE CHOIR PRESENTS BRIGHTEST AND BEST

Thursday, December 12, 2019 at 7 p.m. at the
Performing Arts Mainstage

6201 Winnetka Ave. Woodland Hills, CA

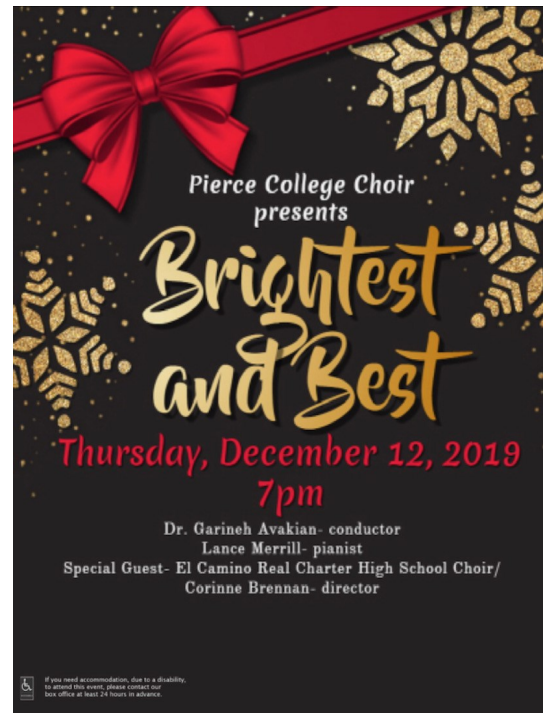
Bethlehem church member, Dr. Garineh Avakian will be conducting. All tickets \$10. Available at the door or online at brownpapertickets.com

DEDICATED TO LIFELONG LEARNING:

Farstrup-Mortenson Lectures/Solvang Folk School Talks
present...THE LITURGISTS

February 21-22-23, 2020 at Bethania Lutheran Church in Solvang, California. Led by Pr. Chris Brown and featuring Michael Gungor and William Matthews from The 'Liturgists Podcast. Come for engaging dialogue and thoughtful discussion on the most pressing and relevant topics of our time through the lenses of art, science, and faith, and enjoy the amenities of the charming Danish-style village of Solvang. For more information, or to listen to a podcast, go to www.theliturgists.com.

Online registration available at: <https://www.bethanialutheran.net/education/>



Performing Arts Mainstage
6201 Winnetka Avenue, Woodland Hills, CA
All Tickets \$10.
Available at the door or online at
brownpapertickets.com
Box Office: 818-719-6488



Bethlehem
LUTHERAN
CHURCH & SCHOOL

12227 Balboa Blvd., Granada Hills, CA 91344